

Op. 6 VIII. Concerto Grosso

Per la notte di Natale

Cello

Arcangelo Corelli

arr. I. Bailey-Mortimer

1.

Vivace



9

Grave

p *espress.*



15



2.

Allegro



5



9



13



17



22



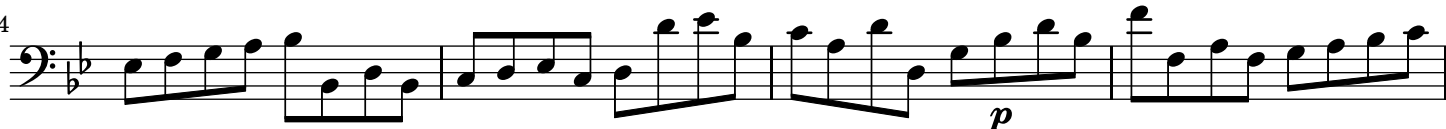
26



30



34



2
38

Cello

f
allarg.

3. **Adagio**

p *mf espress.* **Allegro** *f* *p* *cresc.* *allarg.* *decresc.* **Adagio** *p* *f* *mf espress.* *f* *p* *mf* *p* *allarg.* *a tempo* *allarg.*

4. **Vivace.**

p *f* *mf*

10 *f* *mf* *f* *mf* *f*

19 *p* poco allarg.

5. **Allegro**

f *p*

Cello

3

9 *f* *p* *f*

17 *p*

25 *p* *f* *p* *f* *p* *f*

33 *p* *f* *p* *f* *p*

42 *f* *p* *f* *f* *p*

52 *f* *p* *f*

62 *p* 1. 2.

6. Pastorale

Largo

p *p*

6 *f*

11 *f* *p* *mf* *f*

16 *p* *f* *mf*

21 *f* *p*

26 *f* a tempo *mf* cresc. *p* poco largamente

30

35

41

46

50

54

p

f

p

f

p