

Symphonie n°1 en si bémol

Violon 1

François-Joseph GOSSEC

Allegro Maestoso

Musical score for "The Swan" by Camille Saint-Saëns. The score is written for a single melodic line on a grand staff (treble and bass clefs). The key signature is one flat (B-flat) and the time signature is common time (C). The score includes various musical notations such as dynamics (f, ff, p), articulation (accents, slurs), and fingerings (4, 5). The score is divided into measures, with measure numbers 6, 13, 21, 29, 36, 45, 50, 63, 69, 75, 83, and 89 indicated.

Violon 1

95

103

112

120

127

138

145

151

156

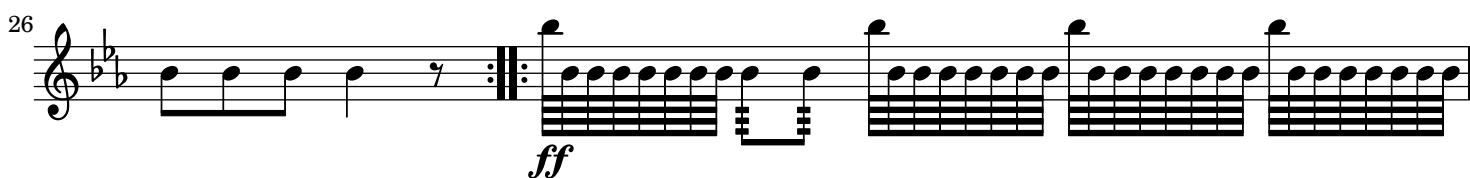
166

174

180

186

Larghetto Siciliana Pantomina



28

29

31

34

37

41

44

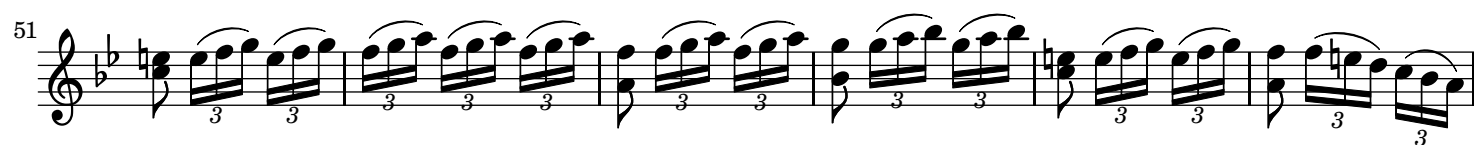
47

52

p

Gossec - Symphonie n°1 en si bémol

Non Presto



78 

91 

100 

109 

119 

129 

140 

148 